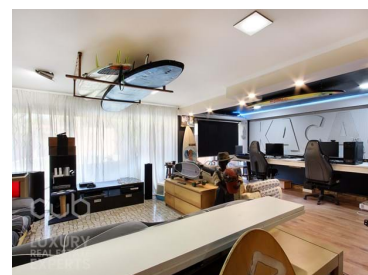




## Charneca de Caparica e Sobreda - Villa



4 Bedrooms  
 5 Bathrooms  
 297,12 Area (m²)  
 500 Land Area (m²)  
 Garage

575 000 €  
(EUR €)

## VILLA SWELL - 3+2 Bedroom Semi-Detached House in Quintinhas

Consisting of three floors, **VILLA SWELL** offers spacious and versatile spaces, where comfort and privacy come together harmoniously.

- **Ground Floor:** Upon entering, you are greeted by a large living room with large windows that allow natural light to enter and offer a serene view of the garden. The modern, fully equipped kitchen open to the living room is perfect for preparing family meals or entertaining friends. On this floor, there is also one of the two multifunctional spaces, which can be used as an office, additional bedroom.
- **First Floor:** The first floor is dedicated to rest, with two bedrooms, all en suite. Each room has been carefully designed to provide maximum comfort, with details that evoke the maritime



**Jorge Marques**

Broker & Real Estate Adviser

967361629<sup>2</sup> · +351 212 975 402<sup>1</sup>

jorge.marques@cub.pt

**T +351 212975402<sup>1</sup> · T +351 967731087<sup>2</sup> · E geral@cub.pt**  
**Rua Elisa Pedroso nº 17-A, 2820-602 Charneca da Caparica**  
**AMI 10044**

<sup>1</sup> (Call to national fixed network) | <sup>2</sup> (Call to national mobile network)



environment. The en-suite bathrooms are spacious with high-quality finishes, creating a spa-like ambience within your own home.

- **Attic:** Fully transformed into an additional suite, where you can accommodate a child of greater privacy age!
- **Lower Floor:** On the lower floor, there is the second multifunctional space, which can also be adapted according to your needs – whether for an extra bedroom, a private office, or a leisure space for your hobbies.

**Exterior:** The exterior of VILLA SWELL does not disappoint. A well-kept garden surrounds the villa, offering a relaxing outdoor space, perfect for convivial moments or simply to enjoy the tranquility of the area. The proximity to nature is a constant, reflecting the proximity to the beaches.

**Location:** Located in the prestigious Marisol/Verdizela area, VILLA SWELL offers the perfect balance between the serenity of the countryside and urban proximity. This area is known for its tranquility and safety, being ideal for families and those looking for a life closer to nature.

**Beaches and Access:** A few minutes away by car, you will find some of the best beaches in Costa da Caparica, known for their perfect waves for surfing and the extensive stretches of golden sand. VILLA SWELL is also well located in terms of access, with easy connection to the A33, which allows you to quickly reach Almada and Lisbon, whether to work or to enjoy all that the capital has to offer.

## Property Features

- Terrace
- Built year: 2007
- Electric garage gate
- Bathrooms (en-suite): 3
- Accessibility\proximity: Beach at 5m
- Solar orientation: North, South, West
- Garage
- Floors: 4
- Borehole
- Quiet Location
- Energetic certification: C



**Jorge Marques**

Broker & Real Estate Adviser

967361629 <sup>2</sup> · +351 212 975 402 <sup>1</sup>

jorge.marques@cub.pt

**T +351 212975402 <sup>1</sup> · T +351 967731087 <sup>2</sup> · E geral@cub.pt**  
**Rua Elisa Pedroso nº 17-A, 2820-602 Charneca da Caparica**  
**AMI 10044**

<sup>1</sup> (Call to national fixed network) | <sup>2</sup> (Call to national mobile network)