



LUXURY
REAL ESTATE
EXPERTS

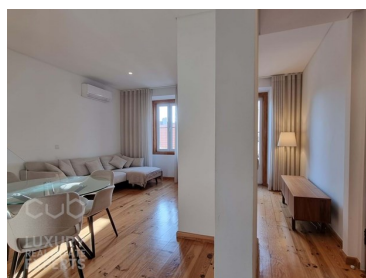
CUB_888

Reference

Scan the QR code to view the property



Ajuda - Duplex apartment



2
Bedrooms

2
Bathrooms

80,2
Area (m²)

2 750 € / Month
(EUR €)

T2 Duplex in Ajuda: The Lisbon Neighborhood Where Tradition and Modernity Meet

Lisbon continues to surprise and attract eyes from all over the world, and the Ajuda neighborhood is one of its best-kept secrets. Between historic alleys, viewpoints with breathtaking views and a series of new leisure and cultural spaces, this area has stood out as one of the most instagrammable and vibrant in the city. For young couples and expats, Ajuda offers the perfect balance between traditional and modern, ideal for those looking to experience authentic Lisbon with the comfort of a modern home.

Today we will explore what this neighborhood has to offer and how it transforms into the right choice for a relaxed and authentic lifestyle in Lisbon.



Jorge Marques

Broker & Real Estate Adviser

967361629 ² · +351 212 975 402 ¹

jorge.marques@cub.pt

T +351 212975402 ¹ · T +351 967731087 ² · E geral@cub.pt
Rua Elisa Pedroso nº 17-A, 2820-602 Charneca da Caparica
AMI 10044

¹ (Call to national fixed network) | ² (Call to national mobile network)



1. Charm and History on Every Corner

The Ajuda neighborhood is where Lisbon's history comes to life. The cobblestone streets, the picturesque houses with typical tiles and the breathtaking viewpoints make this neighborhood a real postcard. Living here is like entering a time capsule, where the past and present coexist in perfect harmony.

For example, the iconic Ajuda Palace, a former royal palace and now a museum of fine arts, is just minutes away. This and other historic spots around it offer a nostalgic charm that is rare to find in other parts of the city.

2. Modern Commerce and Services for a Practical Lifestyle

But Ajuda is more than history and tradition. The neighbourhood has been coming alive with cafes, restaurants and small local shops that offer everything for everyday life. For food lovers, Ajuda's new artisanal cafes and pastry shops are ideal for a late afternoon break, while grocery stores and fresh produce shops add a special touch to everyday life, especially for those who value quality and proximity.

Here, it is also easy to find essential services such as pharmacies, supermarkets and efficient public transport, connecting the neighborhood to the city center in minutes. In terms of convenience, Ajuda is a neighborhood that offers practicality without losing its original charm.

3. Ajuda: The Most Instagrammable Destination in Lisbon

With the growth of tourist interest in Lisbon, Ajuda has been the stage for some of the most photogenic places in the city. The famous Ajuda Botanical Garden and viewpoints offer incredible scenery that is a hit on social media, ensuring an Instagram feed full of nature, architecture and breathtaking landscapes of the Tagus.

For expats who want to show friends and family a taste of their new home in Portugal, Ajuda offers a series of visual experiences that capture the spirit of the city in a unique way.

4. An Apartment That Is the Reflection of Help: Authenticity with Modern Comfort

For those looking for a home in Ajuda, we have an ideal option: a modern 2 bedroom duplex apartment that brings the best of contemporary comfort without losing the essence of Lisbon. Perfect for young couples, this space is an extension of the neighborhood – practical, beautiful and inspiring. With well-distributed rooms, modern architectural details and a central location, this apartment is the starting point to live Lisbon to the fullest.

5. Investing in Lisbon – Why Aid is the Right Choice

Ajuda is today one of Lisbon's emerging neighbourhoods, attracting both residents and investors. Its privileged location, combined with the historic charm and the offer of quality commerce and services, makes this a smart investment for those who want to be part of the future of Lisbon. In addition, the growing demand for spaces in Ajuda makes this a neighborhood with great potential for appreciation.



Jorge Marques

Broker & Real Estate Adviser

967361629 ² · +351 212 975 402 ¹

jorge.marques@cub.pt

T +351 212975402 ¹ · T +351 967731087 ² · E geral@cub.pt
Rua Elisa Pedroso nº 17-A, 2820-602 Charneca da Caparica
AMI 10044

¹ (Call to national fixed network) | ² (Call to national mobile network)



Property Features

- Built year: 1988
- Double glazing
- Central location
- Accessibility\proximity: Museums, Bus, Commercial areas, Restaurants, Touristic areas, Ruins with touristic views
- Solar orientation: East, West
- Water: Main grid
- Views: River view, City view
- Quiet Location
- Thermal acoustic window frames
- Energetic certification: F
- Balcony
- Renovation year: 2021



Jorge Marques

Broker & Real Estate Adviser

967361629 ² · +351 212 975 402 ¹

jorge.marques@cub.pt

T +351 212975402 ¹ · T +351 967731087 ² · E geral@cub.pt
Rua Elisa Pedroso nº 17-A, 2820-602 Charneca da Caparica
AMI 10044

¹ (Call to national fixed network) | ² (Call to national mobile network)